

INSTRUCTIONS FOR LINEAR SLOT INSTALLATION

1. PUSH THE FRONT GRILL OUT OF THE CASING BY PRESSING THE GRILL FROM BEHIND THE VENT.



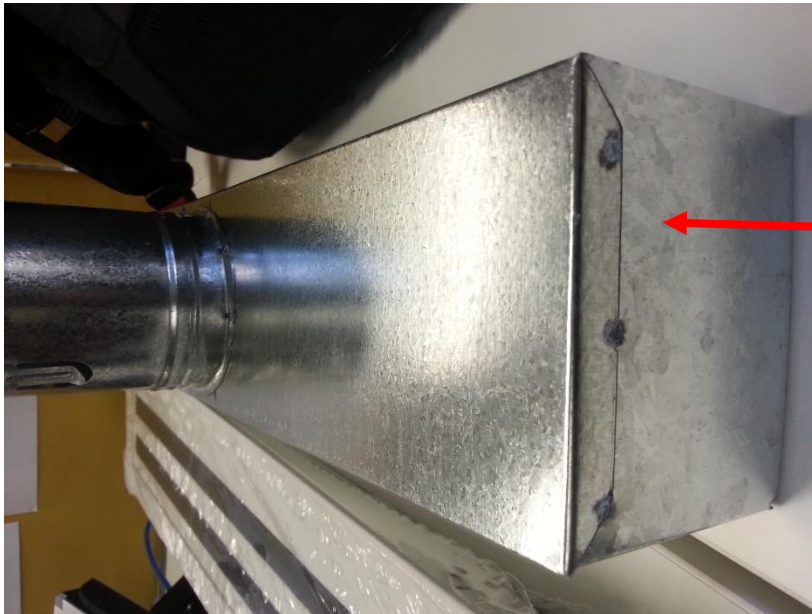
CASING

FRONT GRILL



PUSH FRONT GRILL OUT OF THE CASING FROM BEHIND THE VENT

2. INSERT THE ADAPTOR BOX AND FASCIA INTO THE INSTALLATION LOCATION (WITHOUT THE FRONT GRILL). START WITH THE VENT AND PLACE THE ADAPTOR BOX BEHIND IT.



ADAPTOR BOX

3. MARK HOLES TO BE MADE INTO THE ADAPTOR BOX TO ENSURE A SECURE FIT FOR THE VENT USING THE RECESSED HOLES IN THE VENT AS A GUIDE. TWO PEOPLE MAY BE REQUIRED FOR THIS.



RECESSED HOLES

4. SECURE THE VENT INTO THE ADAPTOR BOX WITH SCREWS. TIMBER CAN BE ATTACHED TO THE EXTERIOR OF THE VENT IF REQUIRED FOR TIGHTENING.

5. ONCE THE ABOVE STEPS ARE DONE, PUSH THE FRONT GRILL OF THE VENT BACK INTO THE CASING.