

Dynamic

Installation Manual

Version 1.0



Contents

IMPORTANT SAFEGUARDS	3
WARNING	3
DELIVERY SET	8
SHORT DESCRIPTION	9
OPERATION RULES	9
PRODUCT DIMENSIONS (MM)	10
MOUNTING	11
INSTALLATION	12
CONNECTION TO MAINS POWER	15
TECHNICAL MAINTENANCE	16
STORAGE REGULATIONS	18
WARRANTY	19

This user's manual is a main operating document intended for technical, maintenance, and operating staff. The manual contains information about purpose, technical details, operating principle, design, and installation of the Dynamic unit and all its modifications. Technical and maintenance staff must have theoretical and practical training in the field of ventilation systems and should be able to work in accordance with workplace safety rules as well as construction norms and standards applicable in the territory of the country.

IMPORTANT SAFEGUARDS

Before installing your new Dynamic Exhaust Fan, it is important that you read and follow these instructions prior to installation, even if you are already familiar with this type of product. Please keep this document readily available for future reference, as it contains servicing and maintenance requirements.

WARNING

- This exhaust fan **MUST** be installed by a Qualified Electrical Contractor in accordance with the local regulations, and all local, state and national electrical codes. Any alterations or additions to building wiring must be completed by a licensed electrical contractor, or person authorised by legislation to work on the fixed wiring of any electrical installation

- This unit is not intended for use by persons (including children) with reduced physical, sensory or mental capabilities, or lack of experience and knowledge, unless they have been given supervision or instruction concerning use of the unit by a person responsible for their safety.
- Children should be supervised to ensure that they do not play with the unit.
- This appliance can be used by children aged from 8 years and above and persons with reduced physical, sensory or mental capabilities or lack of experience and knowledge if they have been given supervision or instruction concerning use of the appliance in a safe way and understand the hazards involved.
- Cleaning and user maintenance shall not be made by children without supervision.
- Children shall not play with the appliance.
- Connection to the mains must be made through a disconnecting device, which is integrated into the fixed wiring system in accordance with the wiring rules for design of electrical units, and has a contact separation in all poles that allows for full disconnection under overvoltage category III conditions.

- Precautions must be taken to avoid the back-flow of gases into the room from the open flue of gas or other fuel-burning appliances.
- The appliance may adversely affect the safe operation of appliances burning gas or other fuels (including those in other rooms) due to back flow of combustion gases. These gases can potentially result in carbon monoxide poisoning. After installation of the unit the operation of flued gas appliances should be tested by a competent person to ensure that back flow of combustion gases does not occur.
- The recommended installation height for the Dynamic 100, 125 and 150 mm, is 2.1 meters or higher from the floor.
- Ensure that the unit is switched off from the supply mains before removing the guard.
- All operations described in this manual must be performed by qualified personnel only, properly trained and qualified to install, make electrical connections and maintain ventilation units.
- Do not attempt to install the product, connect it to the mains, or perform maintenance yourself. This is unsafe and impossible without special knowledge.
- All user's manual requirements as well as the provisions of all the applicable local and national construction, electrical, and

technical norms and standards must be observed when installing and operating the unit.

- Check the unit for any visible damage of the impeller, the casing, and the grille before starting installation. The casing internals must be free of any foreign objects that can damage the impeller blades.
- While mounting the unit, avoid compression of the casing!
- Deformation of the casing may result in motor jam and excessive noise.
- Misuse of the unit and any unauthorised modifications are not allowed.
- Do not expose the unit to adverse atmospheric agents (rain, sun, etc.).
- Transported air must not contain any dust or other solid impurities, sticky substances, or fibrous materials.
- Do not use the unit in a hazardous or explosive environment containing spirits, gasoline, insecticides, etc.
- Do not close or block the intake or extract vents in order to ensure the efficient air flow.
- Do not sit on the unit and do not put objects on it.
- The information in this user's manual was correct at the time of the document's preparation.

The Company reserves the right to modify the technical characteristics, design, or configuration of its products at any time in order to incorporate the latest technological developments.

- Never touch the unit with wet or damp hands.
- Never touch the unit when barefoot.

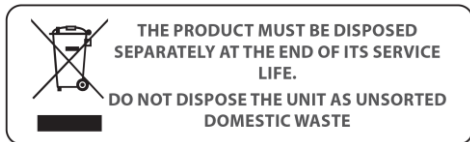
BEFORE INSTALLING ADDITIONAL EXTERNAL DEVICES, READ THE RELEVANT USER MANUALS.

- The single-phase power mains must comply with the acting local electrical norms and standards.
- The fixed electrical wiring must be equipped with an automatic circuit breaker. The fan must be connected to mains power through an automatic circuit breaker (QF Integrated - as per wiring diagram below) into the fixed wiring system, with the gap between the breaker contacts on all poles no less than 3mm.
- Check the fan for any visible damages of the impeller and the casing before starting installation.
- The casing internals must be free of any foreign objects which can damage the impeller blades.
- Installation suitable for **WALLS** or **FLAT CEILINGS**.

- Fulfil the requirements stated in this user's manual to ensure long service life of the product.

RECYCLE AT THE END OF THE SERVICE LIFE.

DO NOT DISPOSE THE PRODUCT WITH UNSORTED MUNICIPAL TRASH.



DELIVERY SET

- Fan: 1 piece.
- Backdraft Shutter: 1 piece
- Screws and dowels: 4 pieces.
- Plastic Screwdriver (only for the models with a timer T): 1 piece.
- User's Manual: 1 piece.
- Packing box: 1 piece.

NOTE: The decorative front panel will come in a separate box to the fan.

SHORT DESCRIPTION

- The unit described herein is an axial fan for exhaust ventilation of small to medium-sized premises.
- The fan design also includes a non-return valve to prevent back flow when the fan is switched off.
- The fan is designed for connection to \varnothing 100, 125 and 150mm air ducts respectively to the purchased model.
- The name and specifications are stated on the label on the unit casing.
- Due to constant improvements the design of some models may slightly differ from those ones described in this manual.

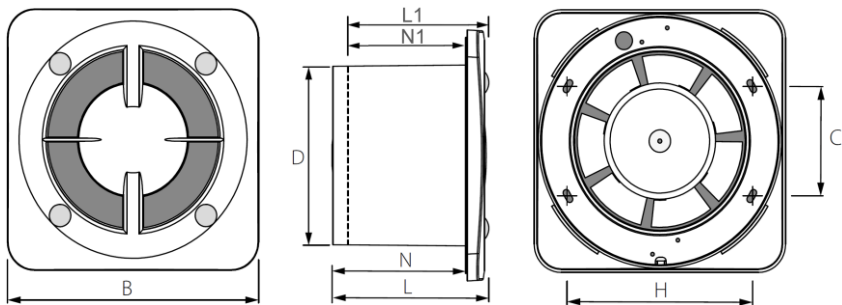
OPERATION RULES

- The fan is designed for connection to AC 220-240 V, 50 Hz power mains.
- Ingress protection rating against access to hazardous parts and water ingress: IP24
- The fan is designed for indoor application only with the ambient temperature ranging from +1°C up to +40°C and relative humidity up to 80%.
- The unit is rated as a Level 2 electrical appliance.

IMPORTANT: If installation of a power socket is required, it must be carried out by a Licenced Electrical Contractor in accordance to AS/NZS3000.

- **DO NOT** operate in high temperature areas such as above or adjacent to cooking equipment.
- It is not designed for external use.

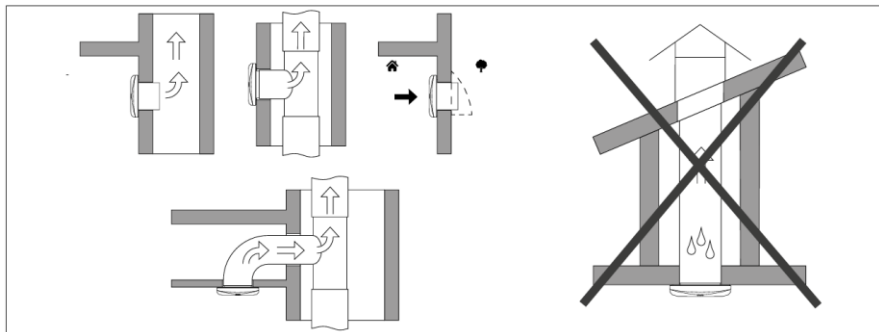
PRODUCT DIMENSIONS (MM)



Model	D [mm]	B [mm]	N [mm]	N1 [mm]	L [mm]	L1 [mm]	H [mm]	C [mm]
Dynamic 100	Ø 99	140	102	88	115	101	103	56
Dynamic 125	Ø 124	165	102	88	115	101	125	70
Dynamic 150	Ø 149	180	120	106	136	121	136	136

MOUNTING

The fan is designed for WALLS or FLAT ceiling installation; in gyprock/plasterboard or other surfaces securely fastened screws into the respective surface. The fan installation location must comply with local building codes for this type of product. Check the fan for mechanical damages prior to mounting. The minimum install depth should be 220mm.



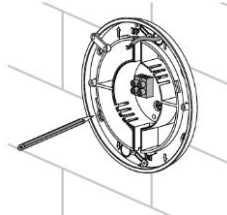
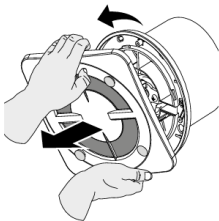
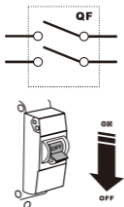
Model	Min installation depth [mm]
Dynamic 100	112
Dynamic 125	112
Dynamic 150	130

INSTALLATION

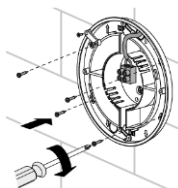
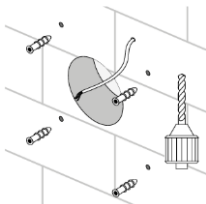
This fan can be installed with a decorative cover (no light). Please ensure you are following the directions for the correct installation.

IMPORTANT: Wall or Flat ceiling installation ONLY.

1. Cut off power supply and prepare the room to install a fan.
2. Remove the motor cover by turning it counter-clockwise.
3. Mark the holes for fixing the fan and the power cable.



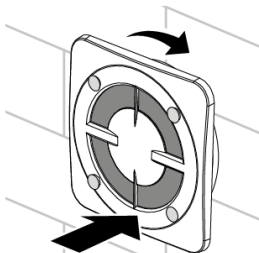
4. Feed the power cable to the ventilation hole, drill the mounting holes and install the dowels.
5. Clip in the backdraft shutter to the back of the fan.
6. Fix the fan with the screws. Connect the fan to power mains according to the wiring diagram.



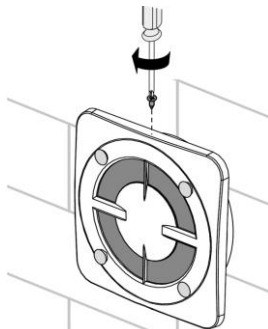
Installation sequence for the decorative WHITE PLASTIC Panel of the fan:

1. Install the motor cover by turning it clockwise (a) and secure it to be motor case with the available screw (b).

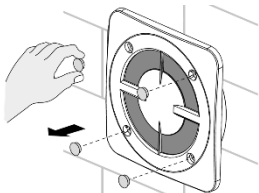
a



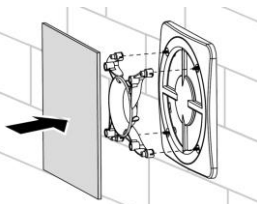
b



2. To Install the motor cover on the fan, remove the plugs.



3. Install the mounts and the decorative cover.



4. Supply power to the fan.



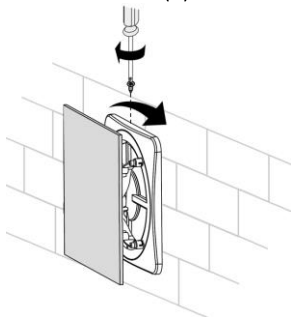
Installation sequence for the decorative WHITE GLASS/BLACK PASTIC Cover of the fan:

WARNING: TO ENSURE THE COVER DOES NOT DETACH FROM THE MOTOR, DO NOT ATTEMPT TO SEPARATE COVER FROM MOUNTING FRAME.

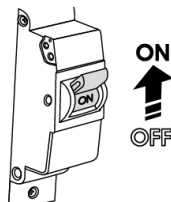
Decorative kit cover will consist of three (3) glued and screwed parts:

- a) White Glass/Black Plastic Cover: 1 pc.
- b) Dowel Joint: 1 pc.
- c) Motor Cover: 1 pc

1. Install the White Glass/Black Plastic cover kit by turning it clockwise (a), and secure it to be motor case with the available screw (b).



2. Supply power to the fan.



CONNECTION TO MAINS POWER

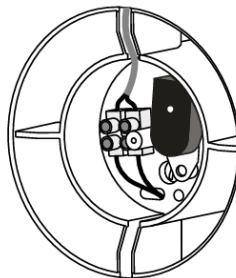
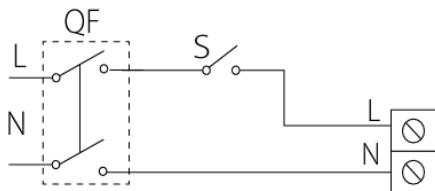
Terminal designation on wiring diagrams:

L - Line

S - ON/OFF Switch

N - Neutral

QF - Automatic Circuit Breaker



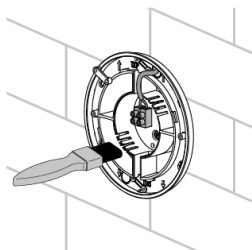
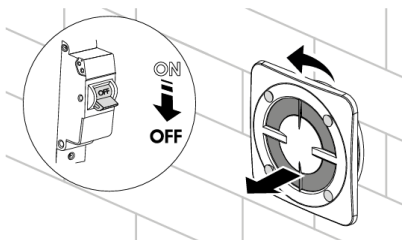
**DO NOT USE A METAL SCREWDRIVER, KNIFE, ETC. FOR
ADJUSTMENT OPERATIONS NOT TO DAMAGE THE CIRCUIT BOARD**

TECHNICAL MAINTENANCE

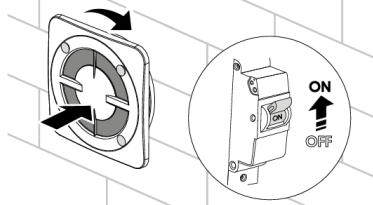
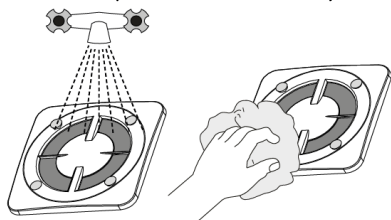
The fan maintenance periodicity is at least once per 6 months.

Maintenance steps:

1. Disconnect the fan from power supply and make sure electricity has been turned off. Remove the front panel.
2. Clean the fan with a soft dry cloth or a brush.



3. Wash the front panel under running water. Wipe the fan surfaces dry.
4. Attach the decorative and front panel to the fan. Connect power supply.



CAUTION: Do not allow water or liquid come into contact with electric components!

CAUTION: *A standard socket and electrical wiring to an ON/OFF wall switch must be pre-installed. It is necessary to arrange for a licenced electrician to ensure this is completed before installation of the product.*

TROUBLESHOOTING:

Problem	Possible Causes	Troubleshooting
When the unit is connected to power mains, the fans does not rotate and does not respond to any controls	No power supply.	Ensure the power supply line is connected correctly, otherwise troubleshoot the connection error.
	Internal connetion fault.	Contact the seller.
Low airflow.	The ventilation system is clogged.	Clean the ventilation system.
Increased noise, vibration.	The impeller is clogged	Clean the impeller.
	The fan is not secured well or is not mounted properly.	Troubleshoot the installation error.
	The ventilation system is clogged.	Clean the ventilation system.

STORAGE REGULATIONS

- Transport the product by any transportation vehicle in the manufacturer's original package.
- Store the delivered product in the manufacturer's original packing box in a dry ventilated premise with the temperature range from +5°C up to +40°C and relative humidity less than 70%.
- The storage environment must not contain dust, acid or alkali vapours that may cause corrosion of the product parts.
- Prior to the initial power-up after transportation at low temperatures, allow the unit to warm up at operating temperatures for at least 3-4 hours.

WARRANTY

Fanco warrants this product against defects in manufacture and workmanship for a period of 2 years from date of purchase when installed for residential use. When installed in a commercial or other non-domestic application, Fanco warrants this product for a period of 3 months from date of purchase.

This warranty is only valid for products installed by a qualified electrical contractor and operated within the guidelines specified by Fanco, and within the correct operating voltage ranges as stated on the product's rating label. Warranty does not include damage or loss arising from incorrect installation, operation or maintenance of this product, damage caused through modification, service by unqualified or unauthorised personnel or lack of regular maintenance and cleaning. Proof of installation by qualified personnel may be required, e.g. Electrical Safety Certificate. Proof of purchase must be supplied with all warranty claims. This warranty is provided in addition to any other rights and remedies of the customer under any law. Fanco does not warrant the costs of removal or re-installation of this product or associated components.

Our goods come with guarantees that cannot be excluded under the Australian Consumer Law. You are entitled to a replacement or refund for a major failure and compensation for any other reasonably foreseeable loss or damage. You are also entitled to have the goods repaired or

replaced if goods fail to be of acceptable quality and the failure does not amount to a major failure.

Any claim under this warranty must be made within 2 years of the date of purchase of the product from invoice date. To make a claim under the warranty; at your own expense take the product (with proof of purchase - receipt or similar) to the store where you purchased the product or contact Fanco at the address below:

Fanco Australia

Authorised National Distributor: Universal Fans Australia Pty Ltd

ABN: 76 104 243 898

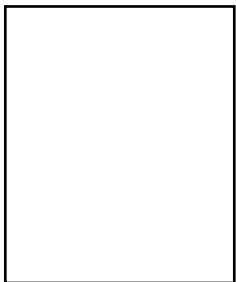
Address: 18 Cleeland Road, Oakleigh South VIC 3167

Phone: 03 8658 9588

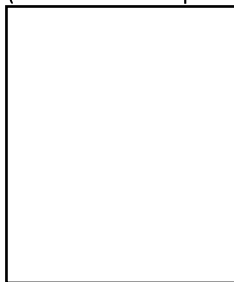
Email: service@fanco.com.au

Model Number	Rated Voltage	Motor Consumption
EMVUDY11	220-240 Vac	14 Watts
EMVUDY12	220-240 Vac	15 Watts
EMVUDY13	220-240 Vac	23 Watts

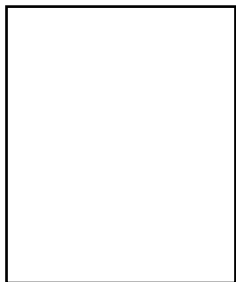
Quality Inspector's Stamp



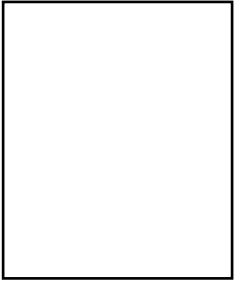
Sold by
(name and stamp of the seller)



Manufacture Date



Purchase Date



fanco●